



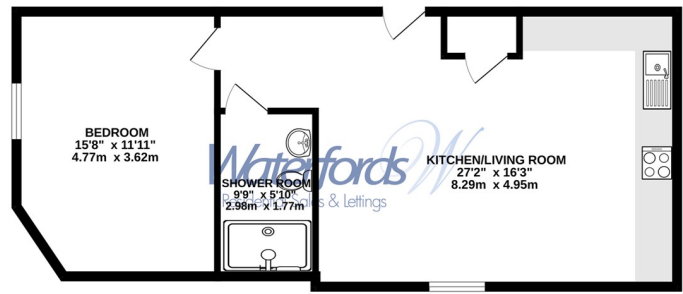
Cambridge Court 121 London Road | | Camberley | GU15 3JY

£1,325 PCM

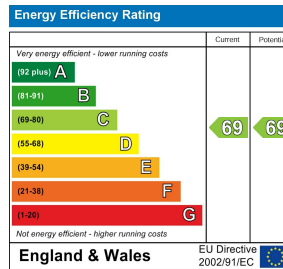
**Waterfords**  
Residential Sales & Lettings



GROUND FLOOR  
618 sq.ft. (57.4 sq.m.) approx.



TOTAL FLOOR AREA: 618 sq.ft. (57.4 sq.m.) approx.  
While every attempt has been made to ensure the accuracy of the floorplan contained here, measurements of doors, windows, stairs and any other items are approximate and no responsibility is taken for any error, omission or mis-statement. This plan is for illustrative purposes only and should be used as such by any prospective purchaser. The services, systems and appliances shown have not been tested and no guarantee as to their operation or efficiency can be given.  
Made with Metaphor (2023)



## Description

Welcome to Cambridge House in the heart of Camberley! This modern apartment, converted just last year from the iconic Cambridge Hotel, offers a perfect blend of history and contemporary living. Situated in Camberley town center, this property boasts one reception room, one bedroom, and one bathroom, making it an ideal space for a single professional or a couple.

The apartment is offered on an unfurnished basis, allowing you the freedom to decorate and style the space to your taste. With its prime location, you'll have easy access to all the amenities and conveniences that Camberley town center has to offer, from shops to restaurants to green spaces.

This property is perfect for those looking for a stylish and convenient living space. Don't miss out on the opportunity to make this apartment your home sweet home. Available February 2026.

## Key features

- Modern Large One Bedroom Apartment
- Town centre location
- High specification kitchen including white goods
- Unfurnished
- EPC C
- Conversion from iconic Cambridge Hotel
- Minimum Term 12 Month Let
- Available February 2026
- Council tax band C



35 Plough Road  
Hampshire  
GU46 7UW  
01276 903006

surreylettings@waterfords.co.uk  
<https://www.waterfords.co.uk/>